



INSTALL CONFIDENCE



GRANDE MID STATIC PRESSURE DUCT 60HZ R410A TOP DISCHARGE
YEFE(12-60)BNTMAMOWX

Indoor Unit

- Auto Random Restart
- Low noise
- Washable air filter
- High velocity air flow
- Easy maintenance
- Reserved remote on-off and alarm ports
- Drain pump (Optional)
- Wireless controller (Optional)



Remote Control

- 5 operation modes: Auto, Cool, Dry, Heat, Fan only
- Multi-speed fan setting: High/Medium/Low/Auto
- 24-hour timer setting
- Big LCD display
- Auto-Restart function



Condensing Unit

- Compact size
- High efficiency compressor
- Low noise
- Valve protection



The YORK® line of MSP duct Air Conditioners includes a wide range of sizes to give you more flexibility in your product offering. Each model is designed to provide comfort and efficiency, in an easy-to-operate unit and the sleek design fits a variety of spaces, whether it's in a home or office. Models meet the highest energy efficiency ratings, so less energy is consumed without sacrificing comfort and performance. Both the condensing and indoor units are engineered for quiet operation. And comfort control settings are easily changed with the touch of a button on the remote control.

Features and benefits



Multi-Speed Fan
Multi-speed fan helps satisfy various airflow requirements.



Washable Filter
Washable filter allows for convenient service and maintenance.



3-Minute Protection
A 3-minute delay before the compressor will restart helps avoid compressor damage and work time.



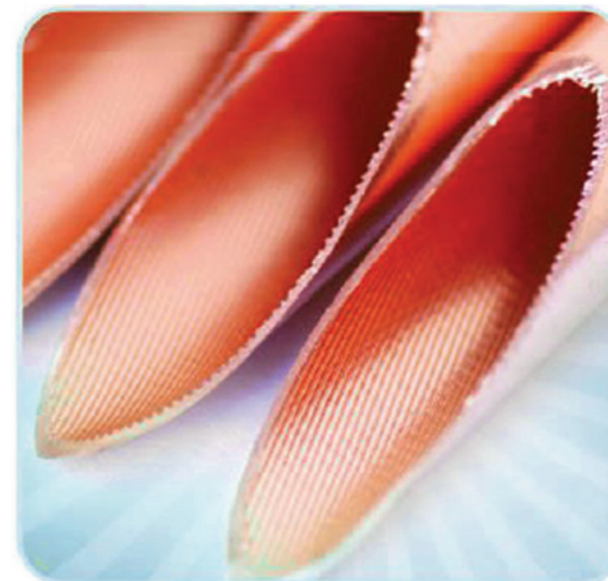
Auto Restart
Unit is automatically returned to previous operating conditions after a power outage, for simplified operation.



24-Hour Timer
Allows programmed start times up to 24 hours in advance for flexible and more convenient operation.



Self Diagnosis
Clearly displayed failure codes allow for quicker troubleshooting and easier maintenance.



Inner Groove Copper Tube

Inner groove copper tubing allows more refrigerant to pass through, improving heat exchange by 30 to 50% when compared to traditional copper tubing, and lowering power consumption while keeping output capacity at the same level.

Specification

York Set Model Number		YEFE36BNTMAMOWX	YEFE36BNVMAMOWX	YEFE48BNTMAMSX	YEFE48BNVMAMSX	YEFE60BNTMAMSX	YEFE60BNVMAMSX
York Indoor Model Number		YEFE36BVTMAM-WX	YEFE36BVTMAM-WX	YEFE48BVTMAM-WX	YEFE48BVTMAM-WX	YEFE60BVTMAM-WX	YEFE60BVTMAM-WX
York Outdoor Model Number		YVFE36BMTMAMO-X	YVFE36BMTMAMO-X	YVFE48BMTMAMS-X	YVFE48BMTMAMS-X	YVFE60BMTMAMS-X	YVFE60BMTMAMS-X
Outdoor Power Supply	V-Ph-Hz	220-230V,1Ph,60Hz	220-230V,3Ph,60Hz	220-230V,1Ph,60Hz	220-230V,3Ph,60Hz	220-230V,1Ph,60Hz	220-230V,3Ph,60Hz
Indoor Power supply	V-Ph-Hz	220-230V,1Ph,60Hz	220-230V,1Ph,60Hz	220-230V,1Ph,60Hz	220-230V,1Ph,60Hz	220-230V,1Ph,60Hz	220-230V,1Ph,60Hz
Max. input consumption	W	5400	5000	6500	6250	7625	7700
Max. current	A	25.5	15.0	30.7	18.1	34.6	23.4
Cooling (T1)	Capacity	Btu/h	36000	36000	48000	48000	60000
	Input	W	3994	3994	5138.6	5138.6	6760
	EER	W/W	2.64	2.64	2.74	2.74	2.6
Indoor fan motor	Qty		1	1	1	1	1
	Input	W	239/186/141	239/186/141	640/510/410	640/510/410	640/510/410
	Capacitor	µF	8	8	20	20	20
	Speed(Hi/Mi/Lo)	r/min	1150/990/870/760	1150/990/870/760	1210/1040/900/800	1210/1040/900/800	12010/1040/900/800
Indoor air flow (Hi/Mi/Lo)	m ³ /h	1725/1193/991	1725/1193/991	2644/2211/1832	2644/2211/1832	2604/2180/1885	2604/2180/1885
ESP	Rated	Pa	37	37	50	50	50
	Range	Pa	0-160	0-160	0-160	0-160	0-160
Sound level (sound pressure)	dB(A)	49.8/42.3/40	49.8/42.3/40	52.1/48.6/45.1	52.1/48.6/45.1	52.4/49.7/46.9	52.4/49.7/46.9
Throttle type		Throttle valve	Throttle valve	Throttle valve	Throttle valve	Throttle valve	Throttle valve
Indoor unit	Dimension(W*D*H)	mm	1100x774x249	1100x774x249	1200x874x300	1200x874x300	1200x874x300
	Packing (W*D*H)	mm	1305x805x305	1305x805x305	1405x915x355	1405x915x355	1405x915x355
	Net/Gross weight	Kg	33.7/41	33.7/41	47.5/56.3	47.5/56.3	48.8/57.9
Design pressure	MPa	4.2/1.5	4.2/1.5	4.2/1.5	4.2/1.5	4.2/1.5	4.2/1.5
Drainage water pipe dia.	mm	ODØ25mm	ODØ25mm	ODØ25mm	ODØ25mm	ODØ25mm	ODØ25mm
Refrigerant piping	Liquid side/ Gas side	mm(inch)	Ø9.52/Ø19(3/8"/3/4")	Ø9.52/Ø19(3/8"/3/4")	Ø9.52/Ø19(3/8"/3/4")	Ø9.52/Ø19(3/8"/3/4")	Ø9.52/Ø19(3/8"/3/4")
Controller		Wired controller	Wired controller	Wired controller	Wired controller	Wired controller	Wired controller
Operation temperature	°C	17-30	17-30	17-30	17-30	17-30	17-30
Room temperature	Cooling	°C	17~32	17~32	17~32	17~32	17~32
Qty'per 20' /40' /40'HQ	Indoor unit		77/161/184	77/161/184	62/130/149	62/130/149	62/130/149
Compressor	Type		ROTARY	ROTARY	SCROLL	SCROLL	SCROLL
	Capacity	W	10450	10350	14300	14400	15800
	Input	W	3480	3400	4540	4537	5650
	Rated current(RLA)	A	17.0	10.9	25.1	18.7	25.8
	Locked rotor Amp(LRA)	A	89	81	138.0	136.8	139.0
	Thermal protector position		INTERNAL	INTERNAL	INTERNAL	INTERNAL	INTERNAL
	Capacitor	µF	80.0	/	80.0	/	60.0
Refrigerant oil/oil charge	ml	α 68HES-H or equivalent/880ml	α 68HES-H or equivalent/880ml	3MAF POE/1242	3MAF POE/1242	FV68S or Equivalent/1400	FV68S or Equivalent/1700
Outdoor fan motor	Qty		1	1	1	1	1
	Input	W	300.0	300.0	318.0	318.0	318.0
	Capacitor	µF	6	6	12	12	/
	Speed	r/min	1100	1100	1095	1095	1095
Outdoor air flow		4500	4500	7400	7400	0	6500
Outdoor noise level	dB(A)	65.5	65.5	64.7	59.6	64.4	64.4
Outdoor unit	Dimension(W*D*H)	mm	600x600x759	600x600x759	710x710x759	710x710x759	710x710x843
	Packing (W*D*H)	mm	628x628x794	628x628x794	738x738x794	738x738x794	738x738x872
	Net/Gross weight	Kg	57.8/61.4	56.8/60.6	71.8/76.1	69.7/74	80/85
Refrigerant type	Type		R410A	R410A	R410A	R410A	R410A
	Charged volume	Kg	1.9	1.9	2.2	2.3	2.2
Design pressure	MPa	4.2/1.5	4.2/1.5	4.2/1.5	4.8/1.5	4.2/1.5	4.2/1.5
Refrigerant piping	Liquid side/ Gas side	mm(inch)	Ø9.52/Ø19(3/8"/3/4")	Ø9.52/Ø19(3/8"/3/4")	Ø9.52/Ø19(3/8"/3/4")	Ø9.52/Ø19(3/8"/3/4")	Ø9.52/Ø19(3/8"/3/4")
	Max. refrigerant pipe length	m	30	30	50	50	50
	Max. difference in level	m	20	20	30	30	30
Room temperature	Cooling	°C	18~43	18~43	18~43	18~43	18~43
Qty'per 20' /40' /40'HQ	Outdoor unit		54/114/171	54/114/171	42/96/144	42/96/144	42/96/142

Nominal testing conditions:

Cooling-Indoor 80.06°F DB/66.92°F WB(26.70°C DB/19.40°C WB) & outdoor 95°F DB/75.02°F WB (35.00°C DB/23.90°C WB)
 Heating-Indoor 69.98°F DB/60.08°F WB(21.10°C DB/15.60 °C WB) & outdoor 46.94°F DB/42.98°F WB (8.30°C DB/6.10°C WB)



Johnson Controls, the Johnson Controls logo, YORK are registered trademarks of Johnson Controls, Inc in the United States of America and other countries. Other trademarks used herein may be trademarks or registered trademarks of other companies.

FOR MORE INFORMATION CONTACT JOHNSONCONTROLS.COM

© 2017 Johnson Controls, Inc, P.O. Box 423, Milwaukee, WI 53201, All rights reserved worldwide.

YEFE(12-60)BNTMAMOWX-170907



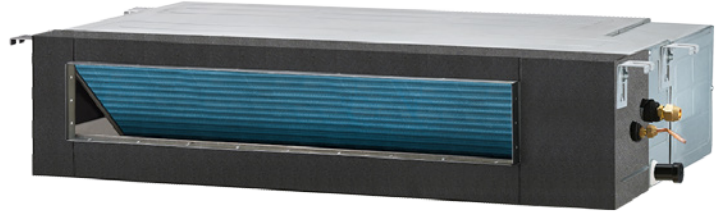
INSTALL CONFIDENCE



MID STATIC PRESSURE DUCT 60HZ R410A TOP DISCHARGE
YEFE(48/55)BNJMATSWX

Indoor Unit

- Washable air filter
- Ultra slim design
- Dual direction of water drainage
- Flexible air intake
- Easy maintenance
- Built-in Drain Pump (optional)
- Healthy filter (optional)
- Can be connected to the air duct
- Remote controller (optional)
- Wire controller



Remote Control

- Temp.range 16°C-31°C
- 5 operation modes:auto,cool,dry,heat,fan
- 24h timer setting
- Child lock
- Economic mode
- Multi-speed auto/low/mid/high
- Error display



Condensing Unit

- Universal design
- 24V communication connection
- High efficiency compressor and motor
- Multiple protection
- Anti-Rust(optional)
- Easier maintenance
- Easier installation
- Low noise

The YORK® line of MSP duct Air Conditioners includes a wide range of sizes to give you more flexibility in your product offering. Each model is designed to provide comfort and efficiency, in an easy-to-operate unit and the sleek design fits a variety of spaces, whether it's in a home or office. Models meet the highest energy efficiency ratings, so less energy is consumed without sacrificing comfort and performance. Both the condensing and indoor units are engineered for quiet operation. And comfort control settings are easily changed with the touch of a button on the remote control.

MID STATIC PRESSURE DUCT 60HZ R410A TOP DISCHARGE

Features and benefits



Multi-Speed Fan

Multi-speed fan helps satisfy various airflow requirements.



Washable Filter

Washable filter allows for convenient service and maintenance.



3-Minute Protection

A 3-minute delay before the compressor will restart helps avoid compressor damage and work time.



Auto Restart

Unit is automatically returned to previous operating conditions after a power outage, for simplified operation.



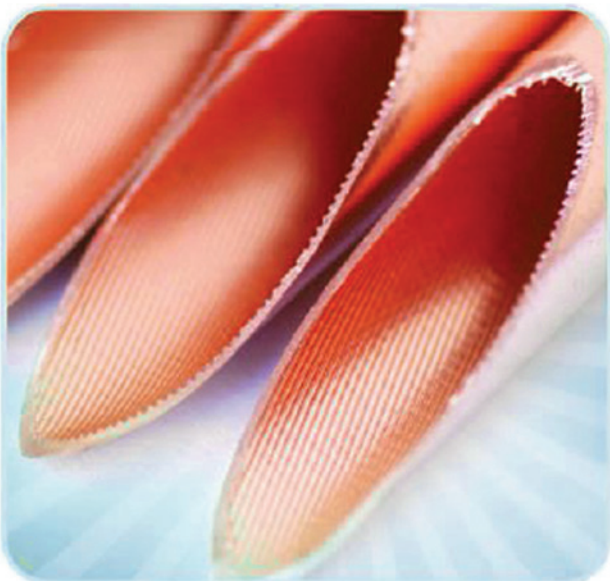
24-Hour Timer

Allows programmed start times up to 24 hours in advance for flexible and more convenient operation.



Self Diagnosis

Clearly displayed failure codes allow for quicker troubleshooting and easier maintenance.



Inner Groove Copper Tube

Inner groove copper tubing allows more refrigerant to pass through, improving heat exchange by 30 to 50% when compared to traditional copper tubing, and lowering power consumption while keeping output capacity at the same level.

Specification

YORK Set Model			YEFE48BNJMATSWX	YEF55BNJMATSWX
YORK Indoor Model			YUFE48BMJMATS-X	YUF55BMJMATS-X
YORK Outdoor Model			YEFE48BVJMAT-WX	YEF55BVJMAT-WX
Indoor Power supply		V/Hz/Ph	208-230V/60Hz/1Ph	208-230V/60Hz/1Ph
Outdoor Power supply		V/Hz/Ph	208-230V/60Hz/1Ph	208-230V/60Hz/1Ph
Cooling	Capacity	Btu/h	48000	55000
	Capacity	W	14063	16119
	Input	W	5005	5756
	Rated current	A	25.00	25.30
	EER	W/W	2.81	2.80
Indoor fan motor	Input	W	433/306/150/119	433/306/150/119
	Running current	A	2.0/1.4/0.68/0.55	2.0/1.4/0.68/0.55
	Capacitor	µF	10.0	10.0
	Applied QTY.		1	1
	Speed (Hi/Me/Lo)	rpm	1045/880/630/570	1045/880/630/570
Indoor air flow (Hi/Me/Lo)		m ³ /h	1800/1600/1100	1800/1600/1100
Indoor external static pressure (Hi)		Pa	100	100
Indoor noise level (Hi/Me/Lo)		dB(A)	52/50/48	52/50/48
Indoor dimension	Unit (WxHxD)	mm	1200×300×865	1200×300×865
	Packing (WxHxD)	mm	1400×371×920	1400×371×920
Indoor weight	Net/Gross	kg	48/55	48/55
Refrigerant	Type		R410A	R410A
Refrigerant pipe	Liquid side/Gas side	mm	9.52/φ 19.05	9.52/φ 19.05
Drainage water pipe diameter		mm	OD25	OD25
Operation temperature range		°C	16-31	16-31
Loading Qty	40HQ/40GP/20GP		130/120/60	130/120/60
Max. input consumption		W	7500	8000
Max. current		A	36.0	40.0
Starting current		A	125.0	125.0
Max Operating Pressure(MPa)	Discharge/Suction	MPa	4.2/1.5	4.2/1.5
	Type		Scroll	Scroll
Compressor	Capacity	W	14200	15600
	Input	W	4950	5750
	Rated current(RLA)	A	24.5	29.1
	Locked rotor Amp(LRA)	A	124	/
	Thermal protector		internal	internal
	Capacitor	µF	60	60
	Refrigerant oil	ml	1400	1400
Outdoor fan motor	Input	W	354	354
	Output	W	217	217
	Running current	A	1.63	1.63
	Capacitor	mF	12.0	12.0
	Speed	rpm	1100	1100
Outdoor air flow		m ³ /h	6900	6900
Outdoor noise level		dB(A)	62	62
Outdoor dimension	Unit (WxHxD)	mm	740×843×740	740×843×740
	Packing (WxHxD)	mm	769×865×769	769×865×769
Outdoor weight	Net/Gross	kg	77/82	77/82
Refrigerant	Charge	g	2600	2350
Throttle type			Piston orifice in indoor unit	Piston orifice in indoor unit
Refrigerant pipe	Liquid side/Gas side	mm	9.52/19.05	9.52/19.05
	Max. refrigerant pipe length	m	50	50
	Max. difference in level	m	30	30
Ambient temperature range	Cooling	°C	21~43	21~43
Loading Qty	40HQ/40GP/20GP		134/90/42	134/90/42

Nominal testing conditions:

Cooling-Indoor 80.60°F DB/66.2°F WB(27.00°C DB/19.00°C WB) & outdoor 95°F DB/75.20°F WB(35.00°C DB/24.00°C WB)
 Heating-Indoor 68°F DB/59°F WB(20°C DB/15 °C WB) & outdoor 44.6°F DB/42.8°F WB(7°C DB/6°C WB)



INSTALL CONFIDENCE.

Johnson Controls, the Johnson Controls logo, YORK are registered trademarks of Johnson Controls, Inc in the United States of America and other countries. Other trademarks used herein may be trademarks or registered trademarks of other companies.

FOR MORE INFORMATION CONTACT JOHNSONCONTROLS.COM

© 2021 Johnson Controls, Inc, P.O. Box 423, Milwaukee, WI 53201, All rights reserved worldwide.

SNEFZCBAA-210930